



## 11 Bruntcliffe Close, Morley, Leeds, West Yorkshire, LS27 0NG

AVAILABLE 15th April 2026

A well proportioned, four bedroom detached house in Morley with stunning outside space.

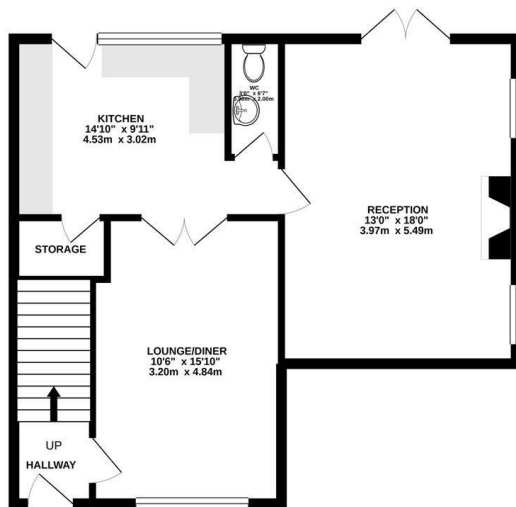
Available unfurnished, this perfect family home comprises two reception rooms, a large separate kitchen and downstairs WC. Upstairs, there are four bedrooms, one house bathroom and one large ensuite. Off street driveway parking for two cars is available to the front and an excellent garden extends out at the rear.

Bruntcliffe Close is a quiet cul-de-sac located on a quiet estate in Morley. Fountain Primary and Morley Victoria Primary are each within 1 mile, as well as Morrisons and Morley Leisure Centre.

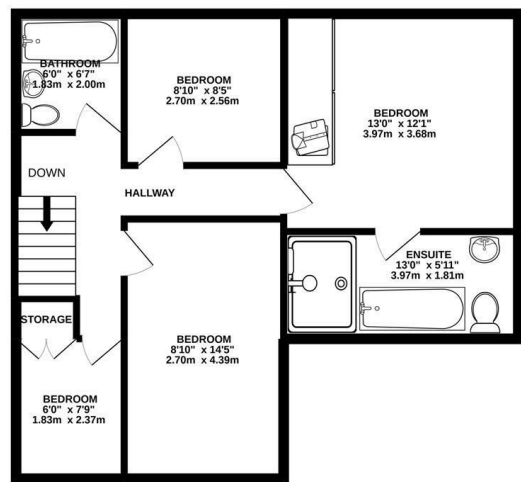
**£1,675 Per month**

[www.fletcherprops.com](http://www.fletcherprops.com)

GROUND FLOOR  
610 sq.ft. (56.7 sq.m.) approx.



1ST FLOOR  
618 sq.ft. (57.4 sq.m.) approx.



TOTAL FLOOR AREA: 1228 sq.ft. (114.1 sq.m.) approx.

Whilst every attempt has been made to ensure the accuracy of the floorplan contained here, measurements of doors, windows, rooms and any other items are approximate and no responsibility is taken for any error, omission or mis-statement. This plan is for illustrative purposes only and should be used as such by any prospective purchaser. The services, systems and appliances shown have not been tested and no guarantee as to their operability or efficiency can be given.  
Made with Metropix ©2020

